



Gàbia

Characteristics

10m2

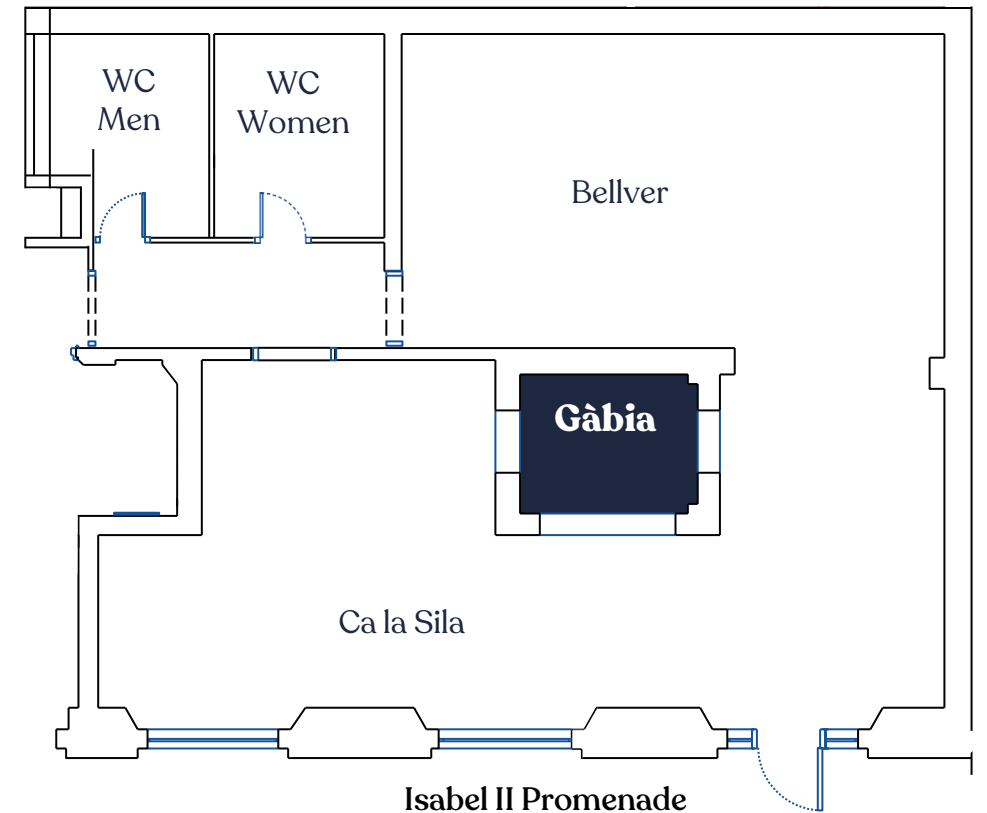
Semiprivate or private room

Ground floor, no stairs

Communicates directly with Ca la Sila and Bellver

Walls decorated with mirrors and semi-open wall with 2 arches

Natural light from the facade facing Isabel II Promenade



Access to toilets, including the disabled

Assembly: round table

If the whole room is occupied the space **can be customized**

Other materials: 42" TV screen, soundproofed room, wireless microphone

Free WiFi

Banquet	
Capability	9